

Specifications

Material

- » Microsurfaced impact acrylic
- Available with or without adhesive.
- To order with adhesive add "8" to the end of the six-digit item code.

Sheet Size

- » 24" x 48¾"
- (610 x 1238mm)

Finish

- » Matte non-glare
- » Gloss ■
- » Brushed metal
- » Patterned

Thickness 2-ply

- » .020" (.5mm)
- (Gauges are approximate.)

Usage

- » Interior signage
- » Trophies, awards and plaques

Engraving Method

- » Laser
- » Rotating carbide
- » Burnish

Cutting Depth

- » .003" (.08mm)

Fabrication

- » Scores
- » Saws
- » Drills
- » Shears
- » Laser vector cuts
- » Bevels
- » Screen prints
- » Hot stamps
- » Permits fine detail engraving

Visit www.rowmark.com for Rowmark's complete line of products for rotary engraving, laser engraving and sublimation.

Find answers to all your questions in the Technical Help section. Be sure to check out support tools under the Sales Tools and Downloads sections.

◆ Not recommended for harsh or high humidity indoor or outdoor applications.

To request a sample or promotional literature, please call 1-877-ROWMARK (419-429-3160) or email samples@rowmark.com. For technical assistance, call 1-877-ROWMARK (419-429-3160), visit www.rowmark.com or email inquiries@rowmark.com.

Can't find exactly what you're looking for? We can build any combination of cap and core within the FlexiBrass® & FlexiColor® product lines. Contact your authorized Rowmark distributor or speak with one of our customer service specialists at 1-800-243-3339 (419-425-2407).



5/11



FlexiBrass® & FlexiColor® Sign Kit item #9030

You may place your FlexiBrass® & FlexiColor® Sign Kit order at www.rowmark.com, or fabricate the signs on your own using the file found under the downloads section of our website.

FlexiBrass® & FlexiColor®

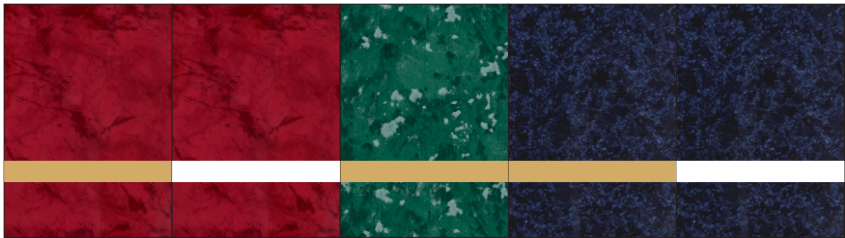


Rowmark

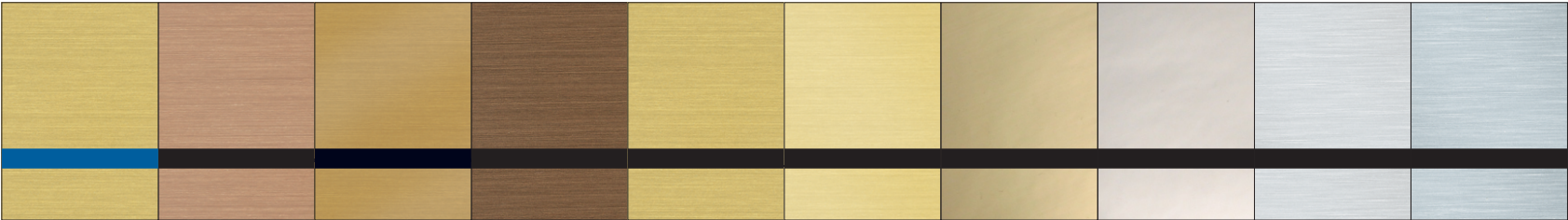
rowmark.com / 1.877 ROWMARK / samples@rowmark.com

FlexiBrass® & FlexiColor®

FlexiBrass® & FlexiColor® have the flexibility to wrap around a curved surface, such as trophies, and serve a multitude of purposes in the ad specialty and indoor signage markets. It's easy to fabricate, lightweight, and will not tarnish like brass.



| | | | | |
|---|---|-------------------------------------|--|--|
| 602-677 ■ Port Wine/ Brass | 602-672 ■ Port Wine/ White | 602-937 ■ Verde/ Brass | 602-577 ■ Celestial Blue/ Brass | 602-572 ■ Celestial Blue/ White |
|---|---|-------------------------------------|--|--|



| | | | | | | | | | |
|---|---|---|---|--|--|---|---|---|--|
| 602-735 Brushed Gold/ Blue | 602-894 Brushed Copper/Black | 602-874 Brushed Bronze/Black | 602-884 Deep Bronze/ Black | 602-734 Brushed Gold/ Black | 602-754 ♦ European Gold/Black | 602-794 ■ Trophy Gold/ Black | 602-394 ■ Trophy Silver/ Black | 602-354 Brushed Alum./ Black | 602-334 Br. Silver/ Black |
|---|---|---|---|--|--|---|---|---|--|



| | | | | | | | | |
|---------------------------------|------------------------------------|----------------------------------|-----------------------------------|-----------------------------------|---|---|--|--|
| 602-602 Red/ White | 602-744 Yellow/ Black | 602-512 Blue/ White | 602-204 White/ Black | 602-402 Black/ White | 602-417 Matte Black/ Brass | 602-427 ■ Gloss Black/ Brass | 602-413 Matte Black/ Silver | 602-423 ■ Gloss Black/ Silver |
|---------------------------------|------------------------------------|----------------------------------|-----------------------------------|-----------------------------------|---|---|--|--|